

A photograph of a city skyline under a blue sky with white clouds. A prominent tall, brick chimney stands in the center. In the foreground, there are green trees and a brick building. The text is overlaid on the image.

Welcome to the new neighbor *HOOD.*

COMMUNITY CHARRETTE II

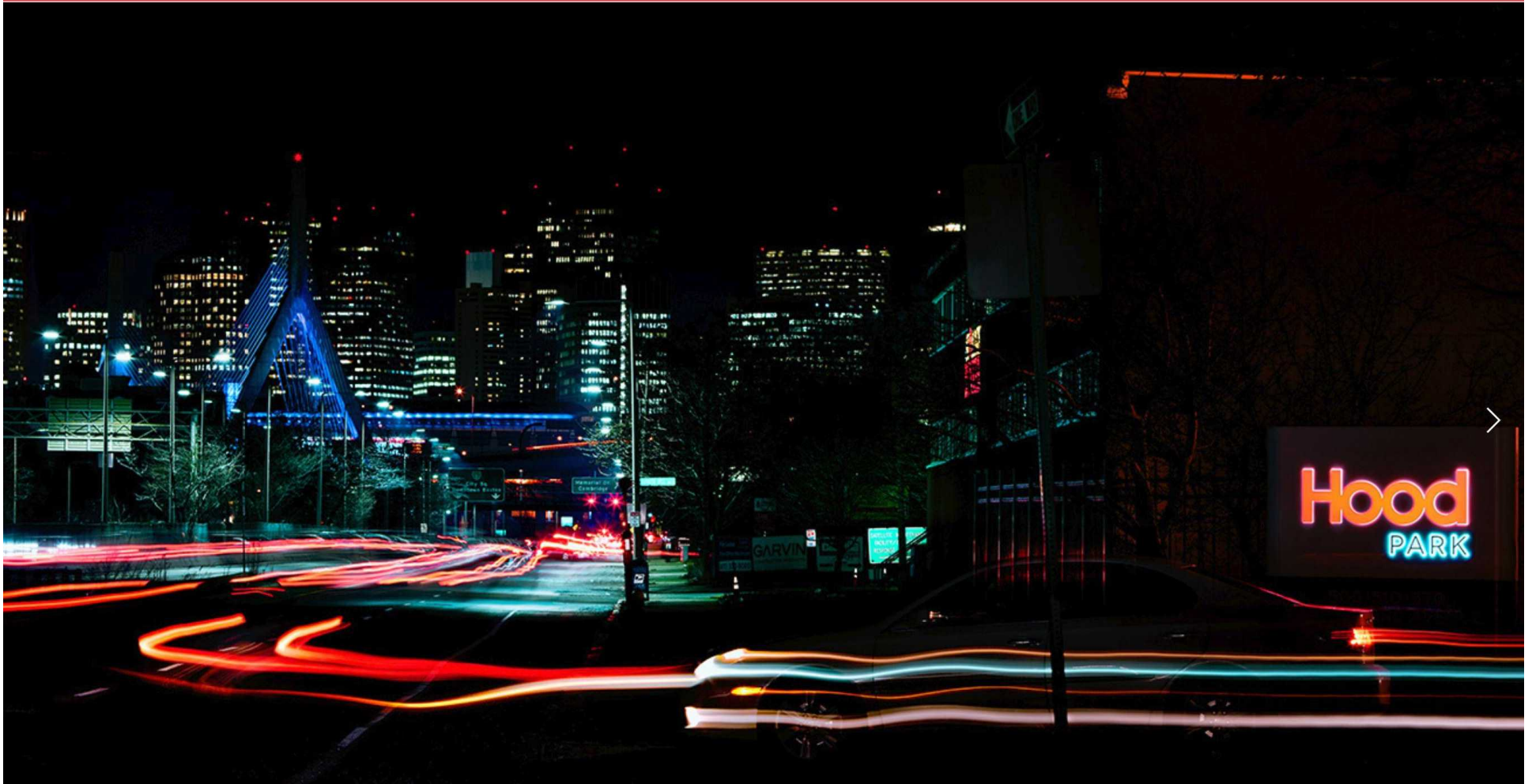
June 23, 2018

HOOD  **PARK**

WWW.HOODPARK.COM

Hood
PARK

[About](#) [Building Availabilities](#) [News](#) [Contact](#) [Gallery](#)



HOOD PARK

THE HARVEY



THEHARVEY.COM

HOOD PARK

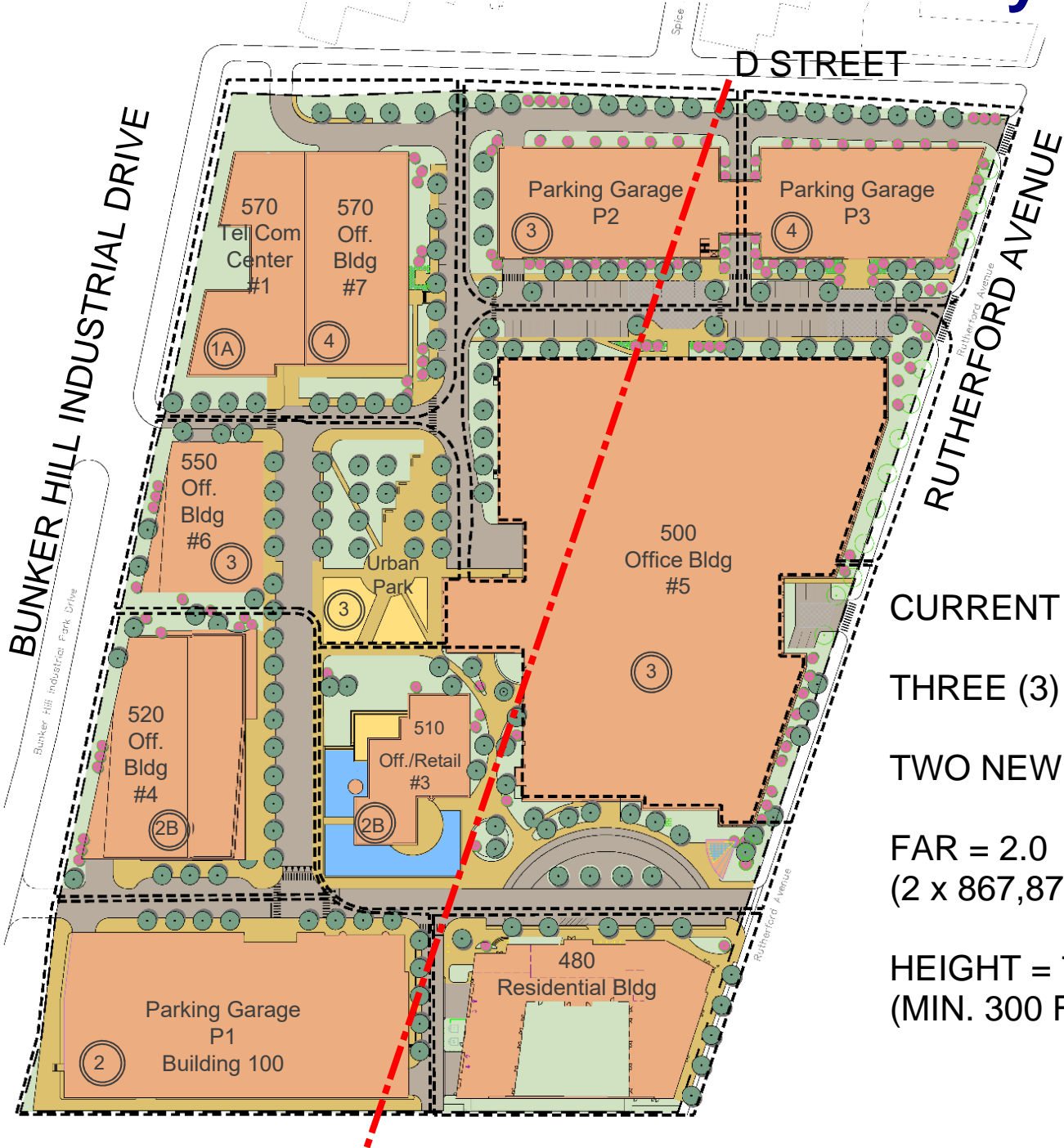
100 HOOD PARK DRIVE



CONSTRUCTION START IN JULY 2018



Hood Park Master Plan Today



PARCEL ID 0202161000
 LOT B
 TOTAL AREA= 867,878 S.F.
 19.924 ACRES

CURRENT **APPROVED** MASTER PLAN:

THREE (3) NEW OFFICE BUILDINGS

TWO NEW PARKING DECKS

FAR = 2.0
 (2 x 867,878 S.F = 1,735,756 S.F.)

HEIGHT = 75' AND 115'
 (MIN. 300 FEET FROM RUTHERFORD)



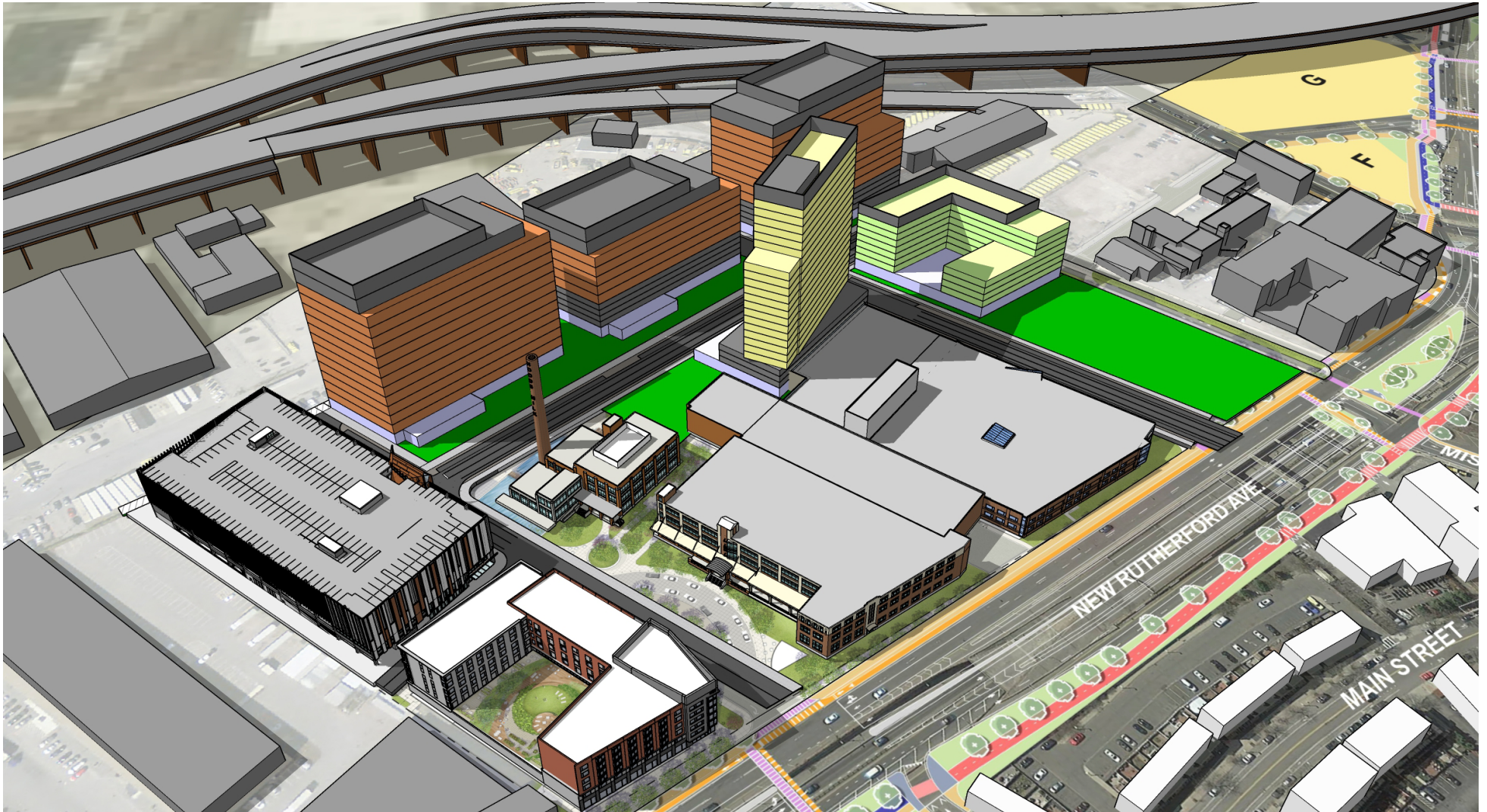
FULL BUILD AT 115' & FAR OF 2.0 (BY RIGHT)



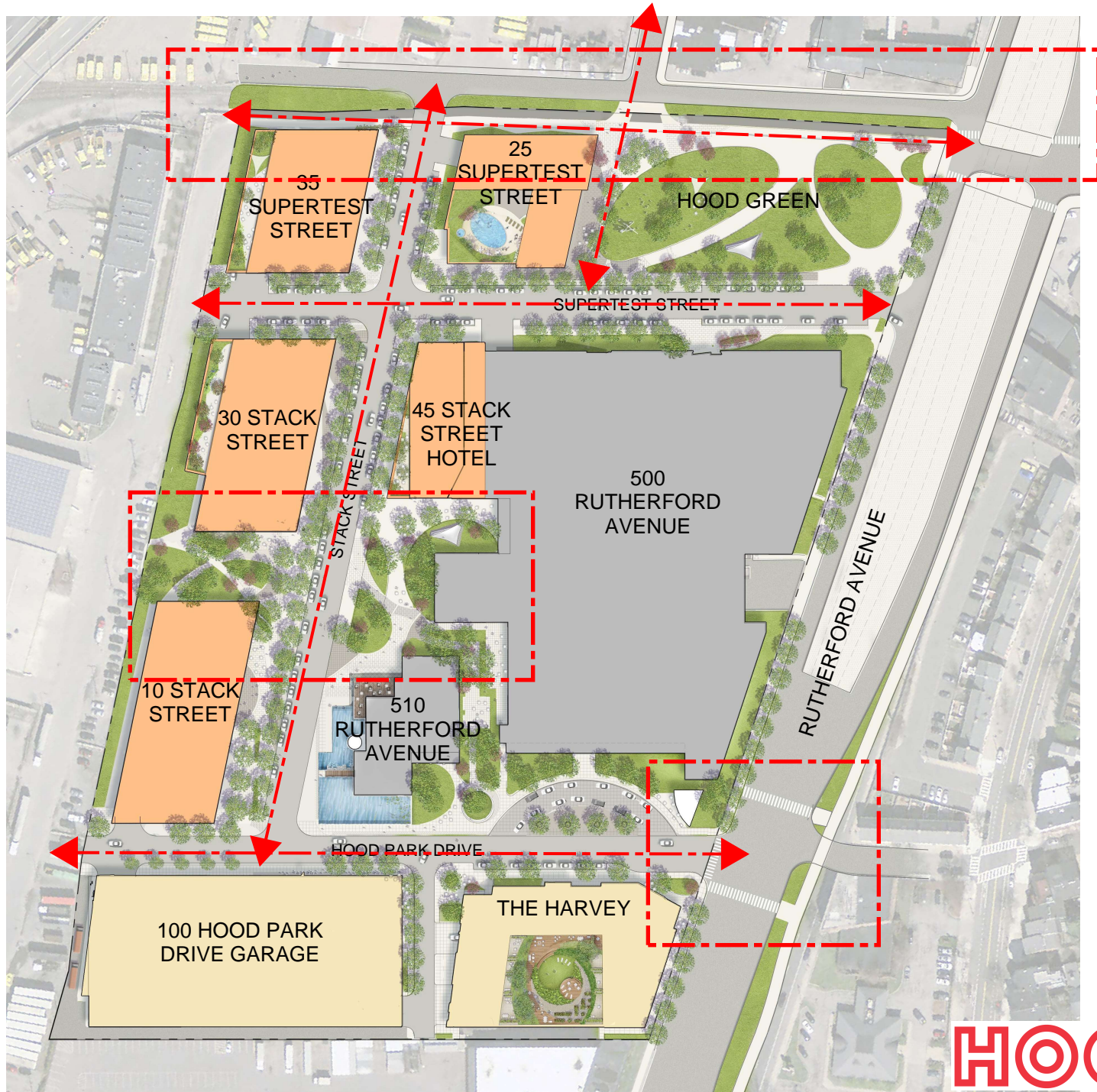
Proposed New Hood Master Plan



What might a new Hood Park look like?



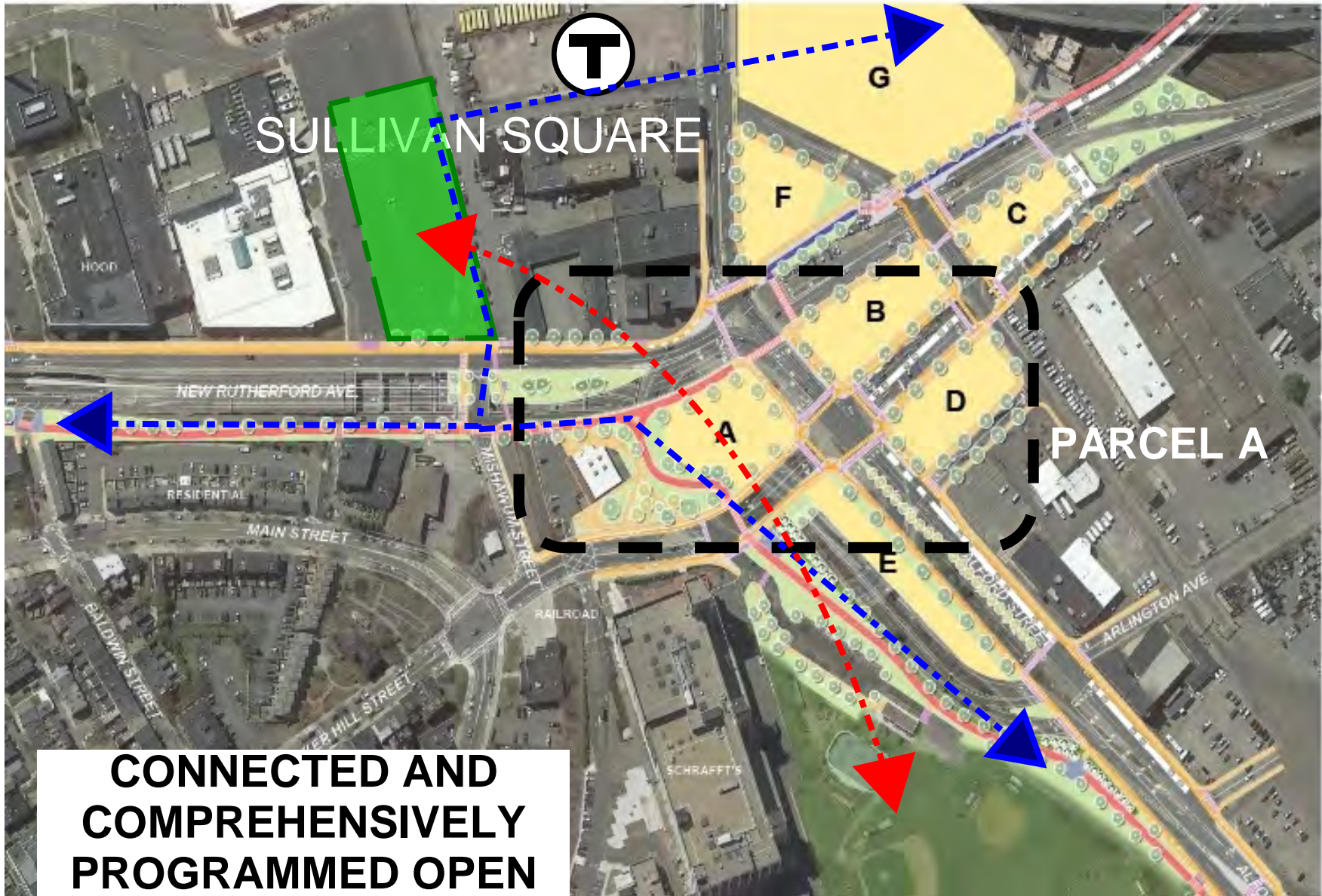
COMMUNITY BENEFITS / INPUT: PUBLIC REALM & RETAIL



COMMUNITY BENEFITS / INPUT: HOOD GREEN

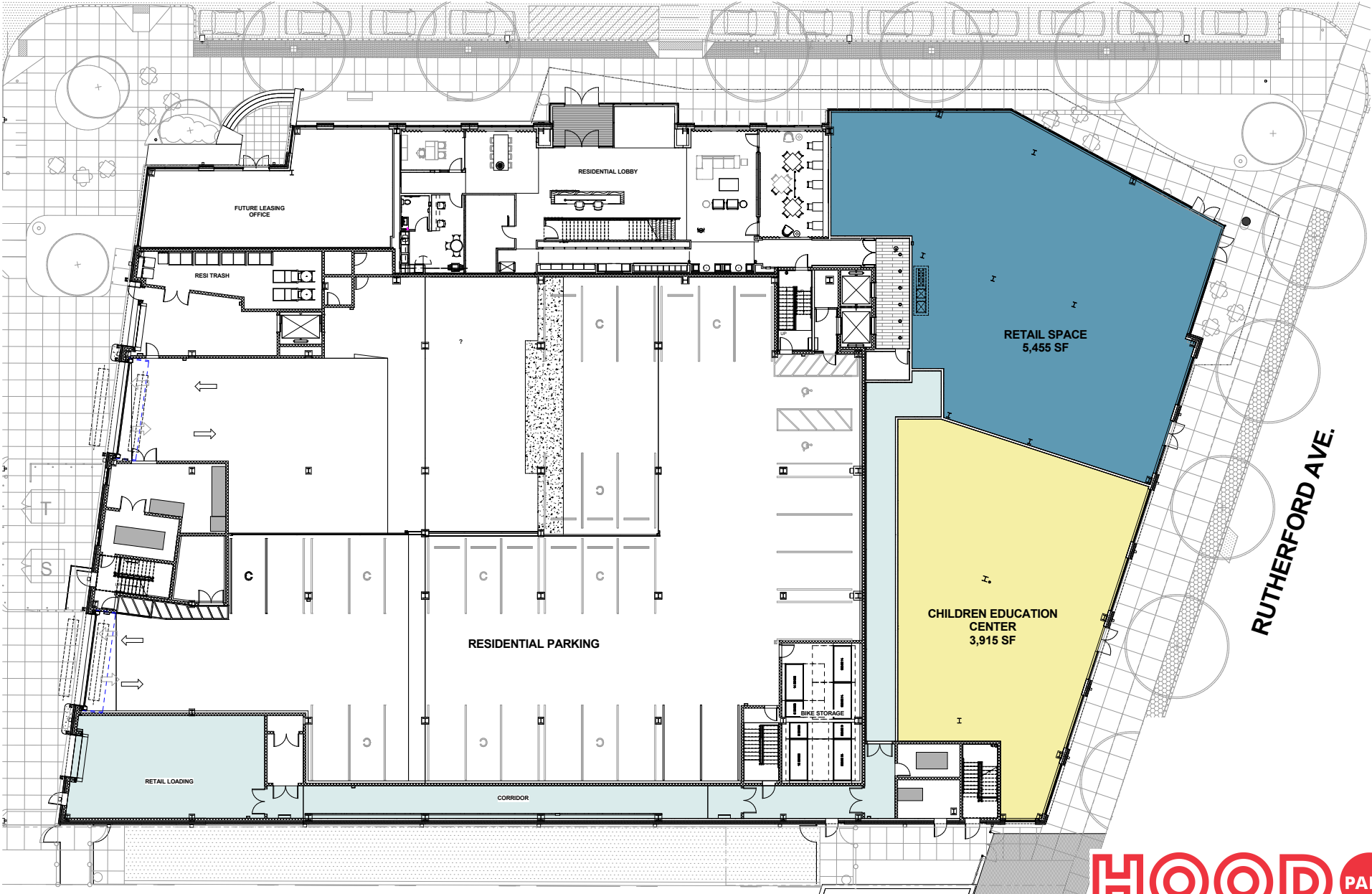


COMMUNITY BENEFITS / INPUT: HOOD GREEN



**CONNECTED AND
COMPREHENSIVELY
PROGRAMMED OPEN
SPACE & PATHS**

COMMUNITY BENEFITS / INPUT: KIDS LAB



COMMUNITY BENEFITS / INPUT: KIDS LAB

Classroom 1: 40 seats

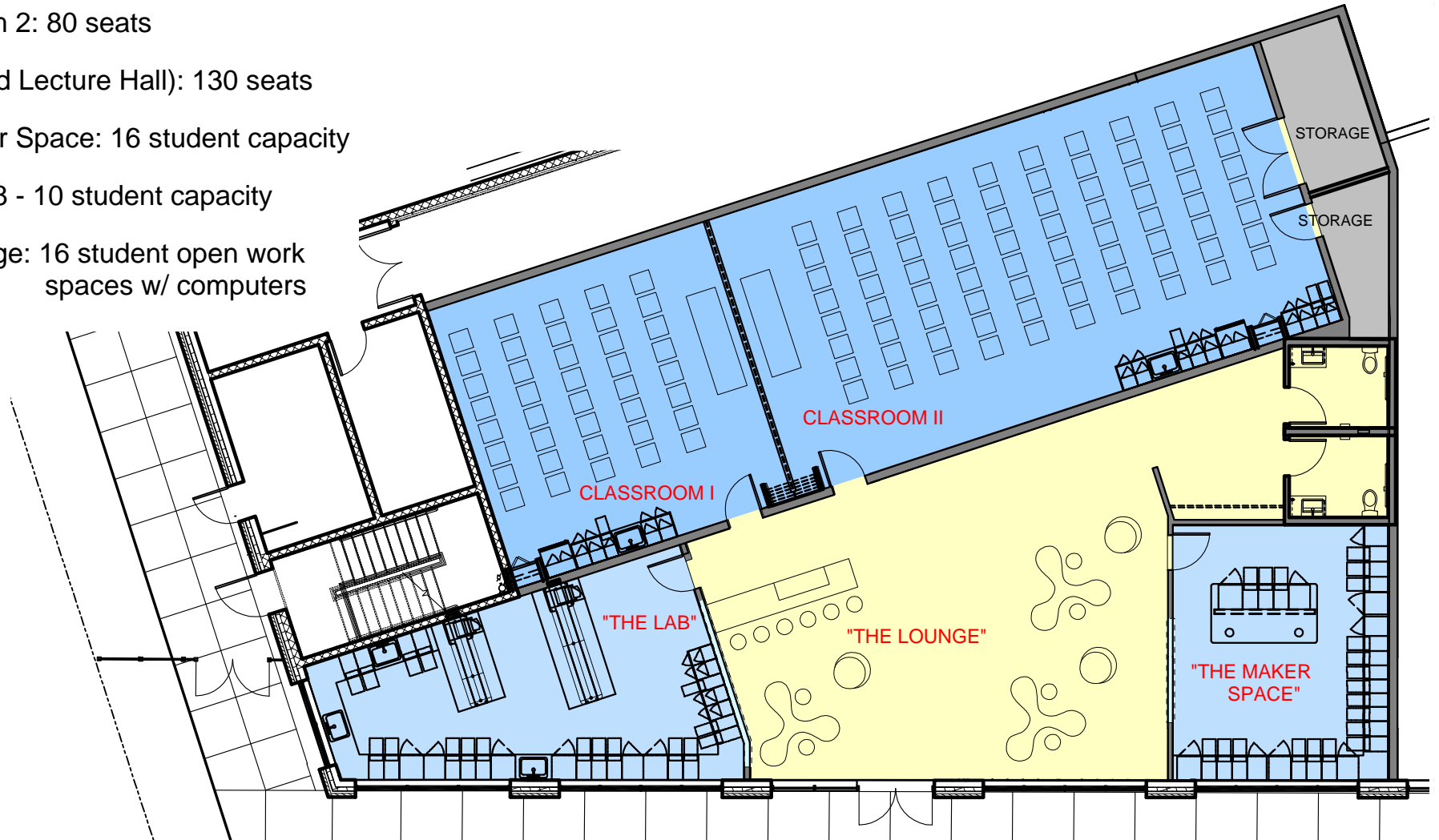
Classroom 2: 80 seats

(Combined Lecture Hall): 130 seats

The Maker Space: 16 student capacity

The Lab: 8 - 10 student capacity

The Lounge: 16 student open work spaces w/ computers



CHARLESTOWN
THE "KID'S LAB"
3,825 SF



NEXT STEPS

WWW.HOODPARK.COM

**BPDA MEETING ZONING MEETING IN CHARELSTOWN
MONDAY, JUNE 25 6PM - 8PM KNIGHTS HALL**

**HOOD PARK WILL FILE AN ENVIROMENTAL NOTIFICATION FORM
(ENF) WITH MEPA FOR THE MASTER PLAN IN JULY**

**FORMAL PERMITTING PROCESS WILL NOT
COMMENCE UNTIL SEPTEMBER**

